
SUPERVELOZ CENTENARY COLLECTION

A NEW SUPERVELOZ COLLECTION
BASED ON JOAN TROCHUT'S PRINTS

About

Designed by Joan Trochut, c. 1942.
Andreu Balius & Ricard Garcia, 2020.

Joan Trochut's SuperVeloz is back at Typerepublic to celebrate the centenary of this great type designer and printer's birth. This collection of 12 brand new styles (all of them with extended character sets and alternative forms) is based on Joan's original prints.

Using the set of modules of the original SuperVeloz of Typerepublic (2005), this collection has ready-made letterforms to make it easier to set text and use them at very large sizes for expressive headlines.

Styles

SV BEBOP

SV BOLERO

SV JAZZ SOLID

SV JAZZ SCRATCH

SV JAZZ WAVES

SV JAZZ STRIPES

SU MAMBO SOLID

SU MAMBO SCRATCH

SU MAMBO WAVES

SU MAMBO STRIPES

SV SWING

SV TWIST

WAVES & STRIPES

CENTENARY COLLECTION

ELENDY

FUNDICIÓN TIPOGRÁFICA IRANZO

NOUADAN

MAMBO STYLE AVAILABLE

JOAN TROCHUT

SOLID & SCRATCH

SV Bebop 24pt

PAULINA S'ÉVEILLE, REGARDE SES BRAS DÉSOLES ET
APPROCHE PEU À PEU, CRAIGNANT LA QUOTIDIENNE
ET DÉTESTABLE RÉVÉLATION, DU MIROIR PLEIN DE
BOSSES PENDU AU-DESSUS DE LA COMMODE. LE
MIROIR REJETTE FROIDEMENT, SANS UN VOILE DE

SV Bebop 38pt

PAULINA S'ÉVEILLE, REGARDE SES
BRAS DÉSOLES ET APPROCHE
PEU À PEU, CRAIGNANT LA QUO-
TIDIENNE ET DÉTESTABLE RÉVÉ-

SV Bebop 54pt

PAULINA S'ÉVEILLE, REG
ARDE SES BRAS DÉSOLES
ET APPROCHE PEU À

SV Bebop 90pt

LINDYHOPPER

SV Bolero 24pt

IT IS STILL A MATTER OF WONDER HOW THE MARTIANS ARE ABLE TO SLAY MEN SO SWIFTLY AND SO SILENTLY. MANY THINK THAT IN SOME WAY THEY ARE ABLE TO GENERATE AN INTENSE HEAT IN A CHAMBER OF PRACTICALLY ABSOLUTE NON-CONDUCTIVITY. THIS INTENSE HEAT THEY PROJECT IN A PARALLEL BEAM AGAINST ANY OBJECT THEY CHOOSE, BY MEANS OF A POLISHED PARABOLIC MIRROR OF UNKNOWN COMPOSITION,

SV Bolero 38pt

IT IS STILL A MATTER OF WONDER HOW THE MARTIANS ARE ABLE TO SLAY MEN SO SWIFTLY AND SO SILENTLY. MANY THINK THAT IN SOME WAY THEY ARE ABLE TO GENERATE AN INTENSE HEAT IN A CHAMBER OF PRAC-

SV Bolero 54pt

IT IS STILL A MATTER OF WONDER HOW THE MARTIANS ARE ABLE TO SLAY MEN SO SWIFTLY AND SO SILENTLY. MANY

SV Bolero 90pt

I LOVE YOU, MUCHO

SV Jazz Solid 46pt / 26pt

EL COMTE GUIFRÉ
EL PELÓS COMTE GUIFRÉ XUCIA
FELIÇ WHISKY I BON VI, QUAN
ESCOLTA JAZZ SOTA D'UN TILLER.

SV Jazz Scratch 46pt / 26pt

EL COMTE GUIFRÉ
EL PELÓS COMTE GUIFRÉ XUCIA
FELIÇ WHISKY I BON VI, QUAN
ESCOLTA JAZZ SOTA D'UN TILLER.

SV Jazz Waves 46pt / 26pt

EL COMTE GUIFRÉ
EL PELÓS COMTE GUIFRÉ XUCIA
FELIÇ WHISKY I BON VI, QUAN
ESCOLTA JAZZ SOTA D'UN TILLER.

SV Jazz Stripes 46pt / 26pt

EL COMTE GUIFRÉ XUCIA
EL PELÓS COMTE GUIFRÉ XUCIA FELIÇ
WHISKY I BON VI, QUAN ESCOLTA JAZZ SOTA
D'UN TILLER. I ACABA BEN TORRAT EL XICOT!

SV Jazz Solid 195pt

JAZZ

SV Jazz Scratch 150pt

RENO

SV Jazz Waves 180pt

TONIA

SV Jazz Stripes 90pt

GRAND HOTEL

SV Mambo Solid 46pt / 26pt

THE QUICK BROWN

**THE QUICK BROWN FOX JUMPS OVER
THE LAZY DOG. FARMER JACK REALI-
ZED THAT BIG YELLOW QUILTS WERE**

SV Mambo Scratch 46pt / 26pt

THE QUICK BROWN

**THE QUICK BROWN FOX JUMPS OVER
THE LAZY DOG. FARMER JACK REALI-
ZED THAT BIG YELLOW QUILTS WERE**

SV Mambo Waves 46pt / 26pt

THE QUICK BROWN

**THE QUICK BROWN FOX JUMPS OVER
THE LAZY DOG. FARMER JACK REALI-
ZED THAT BIG YELLOW QUILTS WERE**

SV Mambo Stripes 46pt / 26pt

THE QUICK BROWN FOX

**THE QUICK BROWN FOX JUMPS OVER THE LAZY
DOG. FARMER JACK REALIZED THAT BIG YELLOW
QUILTS WERE EXPENSIVE.**

SV Mambo Solid 195pt

BOLD

SV Mambo Scratch 150pt

BLUES

SV Mambo Waves 180pt

BOOM

SV Mambo Stripes 90pt

UPRIGHT BASS

SV Swing 24pt

GUARDÒ LA CASA DI CORAL DALL'ALTRO LATO DELLA STRADA: I BALCONI CON UNA PALLA DORATA A OGNI ANGOLO, LE TENDE COSÌ BIANCHE. APPENA EBBE PASSATO IL PORTONE LE VENNE VOGLIA DI ANDARSENE VIA. LE ERA

SV Swing 38pt

GUARDÒ LA CASA DI CORAL DALL'ALTRO LATO DELLA STRADA: I BALCONI CON UNA PALLA DORATA A OGNI

SV Swing 54pt

GUARDÒ LA CASA DI CORAL DALL'ALTRO LATO DELLA STRADA:

SV Swing 90pt

ORCHESTRALI

SVTwist 24pt

ELLE S'EST ENFIN ENDORMIE ET MAINTENANT ELLE SOURIT DANS SON RÊVE, OÙ ELLE SE CROIT BELLE ET CAPABLE DE PÉCHER. TOUTES LES NUITS, LE DIABLE VIENT VOIR PAULINA ET ELLE ATTEND, IMPATIENTE, LA DÉLICIEUSE VISITE. TARD DANS LA NUIT, QUAND LE SILENCE ENVELOPPE D'ÉTOILES ET D'ÉCHARPES DE BRUME LA SÉRÉNITÉ DU CIEL, L'INFERNAL

SVTwist 38pt

ELLE S'EST ENFIN ENDORMIE ET MAINTENANT ELLE SOURIT DANS SON RÊVE, OÙ ELLE SE CROIT BELLE ET CAPABLE DE PÉCHER. TOUTES LES NUITS, LE DIABLE VIENT VOIR PAULINA

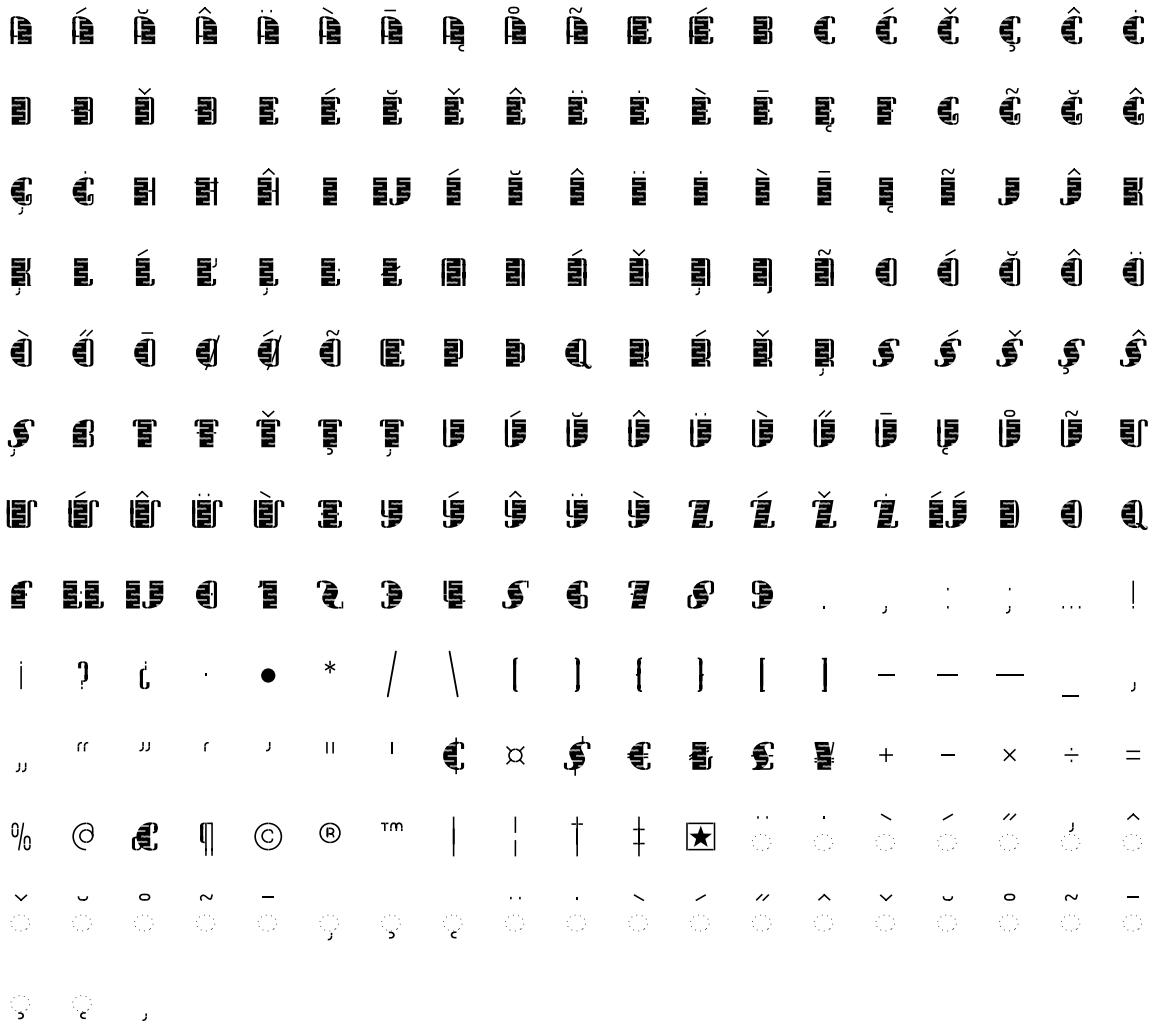
SVTwist 54pt

ELLE S'EST ENFIN ENDORMIE ET MAINTENANT ELLE SOURIT DANS SON RÊVE, OÙ ELLE SE CROIT

SVTwist 90pt

TWIST AND SHOUT!

SV Mambo glyph set



OpenType features

Localized forms
Catalan geminated el

COLLEGI

COLLEGI

Localized forms
Dutch IJ/ij

RIJKSMUSEUM

RIJKSMUSEUM

Alternative forms
Stylistic set 1

AOCPOSY...

AOCPOQ ... SY

Alternative forms
Stylistic set 2

ABEEDQ...

ABEEF ... EQ

Alternative forms
Stylistic set 3

BP

BP

Language support

Abenaki, Afaan Oromo, Afar, Afrikaans, Albanian, Alsatian, Amis, Anuta, Aragonese, Aranese, Aromanian, Arrernte, Arvanitic, Asturian, Atayal, Aymara, Basque, Belarusian, Bemba, Bikol, Bislama, Bosnian, Breton, Cape Verdean, Catalan, Cebuano, Chamorro, Chavacano, Chichewa, Chickasaw, Cimbrian, Cofan, Corsican, Creek, Crimean Tatar, Croatian, Czech, Danish, Dawan, Delaware, Dholuo, Drehu, Dutch, English, Esperanto, Estonian, Faroese, Fijian, Filipino, Finnish, Folkspraak, French, Frisian, Friulian, Galician, Ganda, Genoese, German, Gikuyu, Gooniyandi, Greenlandic, Guadeloupean, Gwichin, Haitian Creole, Han, Hawaiian, Hiligaynon, Hopi, Hotcak, Hungarian, Icelandic, Ido, Ilocano, Indonesian, Interglossa, Interlingua, Irish, Istroromanian, Italian, Jamaican, Javanese, Jerriais, Kala Lagaw Ya, Kapampangan, Kaqchikel, Karelian, Kashubian, Kikongo, Kinyarwanda, Kiribati, Kirundi, Klingon, Kurdish, Ladin, Latin, Latino Sine, Latvian, Lithuanian, Lojban, Lombard, Low Saxon, Luxembourgish, Maasai, Makhuwa, Malay, Maltese, Manx, Maori, Marquesan, Meglenoromanian, Meriam Mir, Mirandese, Mohawk, Moldovan, Montagnais, Montenegrin, Murrinhpatha, Nagamese Creole, Ndebele, Neapolitan, Ngijambaa, Niuean, Noongar, Norwegian, Novial, Occidental, Occitan, Oshiwambo, Ossetian, Palauan, Papiamentu, Piedmontese, Polish, Portuguese, Potawatomi, Qeqchi, Quechua, Rarotongan, Romanian, Romansh, Rotokas, Sami Inari, Sami Lule, Sami Northern, Sami Southern, Samoan, Sango, Saramaccan, Sardinian, Scottish Gaelic, Serbian, Seri, Seychellois, Shawnee, Shona, Sicilian, Silesian, Slovak, Slovenian, Slovio, Somali, Sorbian Lower, Sorbian Upper, Sotho Northern, Sotho Southern, Spanish, Sranan, Sundanese, Swahili, Swazi, Swedish, Tagalog, Tahitian, Tetum, Tok Pisin, Tokelauan, Tongan, Tshiluba, Tsonga, Tswana, Tumbuka, Turkmen, Tuvaluan, Tzotzil, Ukrainian, Uzbek, Venetian, Vepsian, Volapuk, Voro, Wallisian, Walloon, Waraywaray, Warlpiri, Wayuu, Welsh, Wikmungkan, Wiradjuri, Wolof, Xavante, Xhosa, Yapese, Yindjibarndi, Zapotec, Zulu, Zuni.

Text credits

CATALAN
Balius, Andreu. *Pangrama del Comte Guifré el pilós.*

ENGLISH
Wells, H. G. *The War of the Worlds.*
Popular Pangram. *The Quick Fox*

FRENCH
Espriu, Salvador. *Pauline.*
Translated by Mathilde Bensoussan.

ITALIAN
Rodoreda, Mercè. *Aloma.*
Translated by Anna Maria Saludes i Amat.

Typerepublic

Typerepublic is an independent type foundry based in Barcelona dedicated to the design and distribution of exclusive digital fonts. Founded in 2003, Typerepublic shows an interest in those aspects of local style culture. Some of the typefaces are based on the Iberian typographic tradition and they are, in turn, products of a contemporary view of our local history. In addition to our exclusive retail typefaces, Typerepublic offers custom font design that responds to customer needs and identity requirements. It offers any type design solutions, from desktop to web fonts. Also, we could provide with both Latin and non-Latin multiscrypt type families. Some of the fonts in the catalog have been awarded several Certificate of Excellence in Type Design given by the Type Directors Club in New York and the Association Typographique Internationale (ATypI). Typerepublic is above all a way of understanding typography as a powerful tool for communication, as an expression of language and a cultural asset to serve the user experience.

ANDREU BALIUS

Andreu Balius is a type designer and digital punchcutter based in Barcelona (Spain). His first typefaces dates back in 1988 when experimental typography was challenged with the arrival of digital typeface design. He designs both retail and commissioned custom typefaces at typerepublic.com and has been awarded with several Excellence in Type Design for his type design work. He is a member of AGI (Alliance Graphique Internationale), TDC (Type Directors Club) and ATypI (Association Typographique Internationale).

RICARD GARCIA

Ricard Garcia is a type designer, letterer and code enthusiast based in Barcelona. After studying in the Fine Arts faculty at the University of Barcelona (2015) he graduated from the master programme Type and Media at the Royal Academy of Art in The Hague (2019). Starting as a junior type designer in 2014 he is now balancing his work between design and tool development at Typerepublic.

